



# Practical guide for international students



Universitat Autònoma de Barcelona  
[www.uab.cat/es](http://www.uab.cat/es)

Last updated September 2022

**UAB**  
Universitat Autònoma  
de Barcelona

**UABCEI**  
CAMPUS DE EXCELENCIA  
INTERNACIONAL

# What you can find in this guide

## Information about the UAB:

- [Barcelona: university city](#)
- [Get to know the UAB](#)
- [Medical insurance](#)
- [Medical services and psychological support](#)
- [Services for social inclusion](#)
- [Observatory for Equality](#)
- [Sports and Language services](#)
- [Computer services and online resources](#)
- [Activities for international students](#)

## Before coming to the UAB:

- [Plan your stay in Barcelona](#)
- [Immigration and residency procedures in your home country](#)
- [UAB employment portal and work permits](#)
- [How to get to the UAB](#)

## Arrival at the UAB:

- [International Support Service](#)
- [Immigration and residency procedures on arrival](#)
- [Course registration](#)
- [UAB membership card](#)
- [Courses and programmes for international students](#)
- [UAB Summer School](#)

If you have any questions please contact:



[International Support Service](#)

Support for students, teaching staff, researchers and administration and services staff from other countries.





## Barcelona: university city

Barcelona is the ninth best city in the world and the third in Europe according to the [2023 World's Best Cities](#) ranking produced by Resonance Consultancy. Competitive identity, community wellbeing and future prosperity are some of the [23 elements evaluated in the ranking](#).

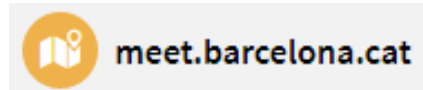
Barcelona has become a prestigious big brand identified with aspects such as creativity, talent, quality of Life, modernity and economic, technical and social progress.

With five public and three private universities Barcelona is home to **more than foreign 25,000 students and researchers** every year, giving them a unique opportunity to get to know other cultures and enrich their personal and professional relationships.



### Study and research

**40% of Master's degree and postgraduate students and 30% of PhD students come from other countries.**







## Get to know the UAB

The [Universitat Autònoma de Barcelona](#) is a leading **public** university with an **international vocation**, that promotes mobility, collaboration and the attraction of talent.

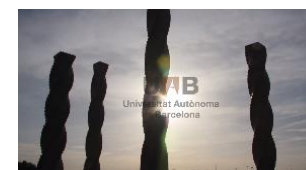
The UAB offers high level studies in all areas of knowledge, with around 100 [Bachelor's](#) degrees, around three hundred [official Master's degrees and postgraduate courses](#), and around 70 [PhD programmes](#).

Teaching at the UAB is multidisciplinary and closely linked to [research activities](#).

The [UAB](#) campus covers 263 hectares, with 60% woodland and green areas, located very close to Barcelona.

It offers all kinds of services: specialised [libraries](#) open 24 hours a day, computer rooms and laboratories, a [language school](#), [health centre](#), [sports complex](#), theatre, cinema, restaurants, shops, a hotel and the [Vila Universitària](#) accommodation right on the campus with more than 2,000 places.

The [UAB campus](#) is a safe place with lots of greenspace and biodiversity just half an hour from Barcelona.



- [Choose the future.](#)  
[Choose the UAB](#)

[video 1 min 50 s]

[The UAB in the main international rankings](#)

# Are You Covered?

## Medical insurance

**All students, researchers and teaching staff from abroad who come to a Catalan University must have Medical Insurance.**

- [Medical insurance for EU students](#)
- [Medical insurance for non-EU students](#)

### Non-EU students

All students who come to a Catalan University must have Medical Insurance. We recommend you take out a policy with full cover for illness and accidents during your journey or stay in Spain. This means a minimum insured capital of 300,000 euros, with no co-payments or waiting periods.

The [Ómnibus insurance broker](#) offers UAB students health insurance for mobility stays in Spain.

However, any other insurance that fulfils the requirements of the corresponding consular office in Spain would be acceptable.

### EU students

Students and teaching and research staff from the European Union, Norway, Iceland, Liechtenstein or Switzerland can apply for a European health card. The [European Health Insurance Card \(EHIC\)](#) is a personal non-transferable document that gives you the right to receive the health care considered necessary by medical professionals during a short stay in any of the territories of the European Economic Area or Switzerland, taking into account the nature of the care and the forecast duration of the stay, in accordance with the legislation of the host country independently of whether the purpose of the visit is tourism, professional activity or studies. Healthcare is offered at the [primary care centre](#) corresponding to your place of residence. In any case we recommend you take out additional insurance to cover any possible co-payments.







## Medical services and psychological support

### Healthcare Service

The Healthcare Service (SAS) is located on the university campus and offers primary and preventative care and the promotion of good health and research.

#### [Healthcare Service \(SAS\)](#)

93 581 18 00 / 93 581 13 11

servei.salut@uab.cat

### Psychopedagogic Assessment Unit (UAP)

The UAP is a service that offers support for the continuing learning process of UAB students.

This help is available strictly for general academic problems such as time management and offers study strategies, educational orientation, etc.

#### [UAP – Psychopedagogical Assessment Unit](#)

93 581 29 43

uap@uab.cat

### Psychological support

The Psychological Support and Speech Therapy Service of the Faculty of Psychology offers online psychological support.

If you want to be attended in English, Italian, French or German please make an appointment by writing to [info@utccb.net](mailto:info@utccb.net).

#### [Psychology and Speech Therapy Service](#)

900 10 15 80

spl@uab.cat



## Services for social inclusion

### Fundació Autònoma Solidària (FAS)

The FAS designs and carries out university social action projects, awareness-raising projects and projects to promote a critical spirit with the ai of generating a social impact for social justice, and the improvement of the local area and people's quality of life.

#### [Fundació Autònoma Solidària](#)

93 581 24 85

fas@uab.cat



### PIUNE

The Service for Inclusion in the University of students with specific educational needs works to ensure that any person, regardless of their disability or SEN can gain access to higher education with the same equality of opportunity and enjoy a full and independent academic and social life at university.

#### [PIUNE](#)

93 581 47 16

fas.piune@uab.cat



# Observatory for Equality

## Observatory for Equality

The Observatory for Equality is mainly dedicated to analysing inequalities in the university institutions and drawing up actions plans for gender and disability.

[Observatory for Equality](#)

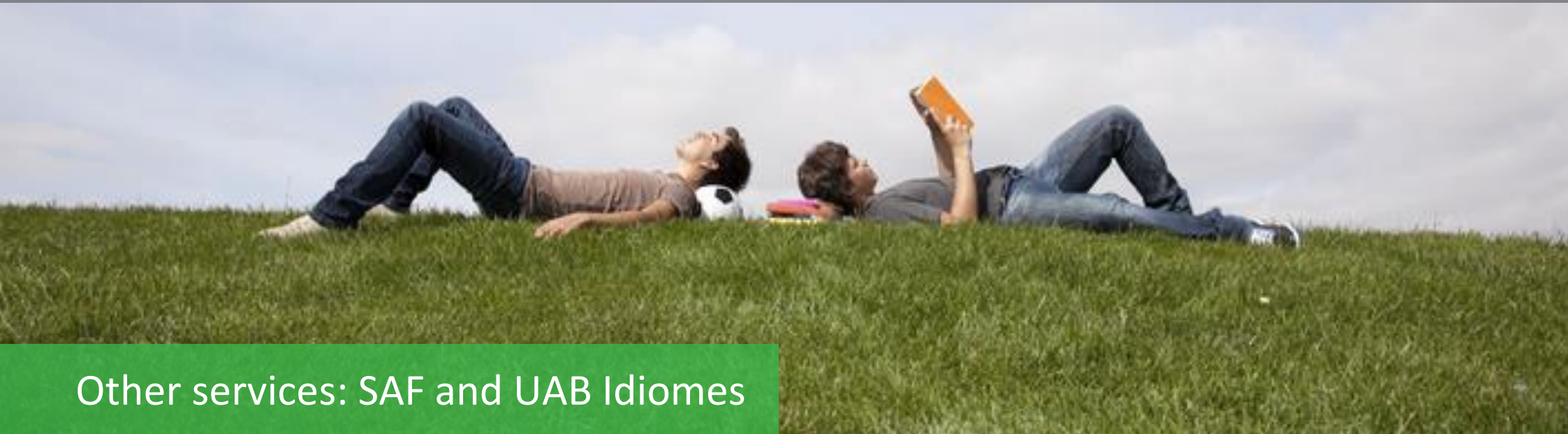
93 581 29 29

[observatori.igualtat@uab.cat](mailto:observatori.igualtat@uab.cat)



Observatori per  
a la **Igualtat** UAB





## Other services: SAF and UAB Idiomes

### UAB Sports Service (SAF)

The SAF is the organisation that manages the sports facilities on the UAB campus.

It has a team of over fifty people and more than 30,000m<sup>2</sup> of installations offering a wide variety of sports activities.

On the SAF sports complex there are basketball courts, football pitches, volleyball and paddle courts, among others. There is also a fitness room, swimming pool and climbing wall, as well as instructor sessions.



[UAB Sports Service \(SAF\)](#)

93 581 19 34

saf.usuaris@uab.cat

### Language Service (UAB Idiomes)

UAB Idiomes offers beginners and more advanced levels in Catalan and Spanish in small groups that allow fast learning, practice and improvement with expert teachers.

A wide range of other language courses are also available.



[UAB Idiomes](#) (Language Service)

93 581 13 25

s.llengues.info@uab.cat



## Computer services and online resources

### CAS

The UAB has a **computer advice service** to answer your questions and offer remote assistance.

#### [Centre for Advice and Support \(CAS\)](#)

93 581 21 00

[cas@uab.cat](mailto:cas@uab.cat)



### Self-learning resources

The UAB offers all students, lecturers, researchers and administration and services employees a series of self-learning resources for studying and distance working.

#### [Self-learning resources](#)

### MOOCs at the UAB

The UAB has joined the world of MOOCs in coherence with its Master Plan which established a clear desire for the transfer of scientific, technological, cultural and training knowledge through quality teaching with a clear international vocation.

#### [MOOCs at the UAB](#)

93 586 80 53

[mooc@uab.cat](mailto:mooc@uab.cat)

**MOOCs**  
Massive Online Open Courses





## Activities for international students

- At the beginning of each acadèmic year, the UAB welcomes international students during the [International Welcome Days](#).

During these days there are activities, workshops and talks to show students What the acadèmic, social and cultural life is like on the campus. It is a good way of getting to know the UAB and meeting other students, both local and international.

[More information](#)

If you are an exchange student there are opportunities to take part in the following programmes:

### [Buddy](#) (or mentor)

UAB buddies are local students from your faculty who can make your stay at the university easier academically and socially.

### [Tàndem](#)

The Tàndem programme sets up language pairs or groups to learn or improve other languages. You will also meet people from other cultures and places.

- One of the things that makes the UAB diferent is the large number of interest associations. During your stay you can join these **Student associations** and take part in the activities. Some examples are: the Role-play Society, the human towers group (Ganàpies) and the Swing Club. There are lots of opportunities for extra-academic activities. In [theDirectory](#) you can find all the information about student associations at the UAB.



## Plan your stay in Barcelona

### Accommodation and living costs

In general you should budget for the following monthly outgoings:

- Food: €250 to €350.
- Personal and leisure expenses: €160 to €220.
- Transport: €60 to €80.
- Accommodation: rented room €250 to €500.

**Total: between €800 and €1,200 a month for accommodation and living costs.**

### Study costs

The registration fee includes all academic costs. At public Spanish universities this cost is apart from accommodation and living costs.

Academic fees are calculated according to the number of subjects you register for. You can consult the approximate cost of your fees using the registration simulator.

[Registration simulator](#)



# The Vila Universitària and other accommodation options

## Accommodation

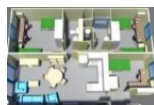
The UAB has accommodation available for the university community on the campus. The Vila Universitària has more than 800 apartments, that can house 2,100 people. Currently 700 residents are from abroad.

## How to get to the Vila?

The Vila is situated on the university campus.

You can find out how to get there on the Vila Universitària [website](#) .

[Choose your apartment](#)



## Services available at the Vila

Close to the Vila there is a bar-restaurant, a small supermarket, a pharmacy, two banks, an optician, a book and stationery shop, a gym and a photocopy centre.

Near to the campus are the small towns of Cerdanyola del Vallès, Sant Cugat o Sabadell.

## Other accommodation

If you prefer to live off campus we also have a service offering [contact with other types of accommodation](#).

We also suggest you get in touch with the companies we work with for more offers:

[BCU](#)

[Resest](#)

The Law on Foreign Nationals is constantly being updated. It is very important to contact the [International Support Service \(ISS\)](#) before you arrive. We will inform you of the procedures as future students of the UAB.

## Immigration and residency procedures in your home country

### EU students

Students from the European Union do not need to carry out any administrative procedures **before arriving in Spain**.

- [Legal procedures for EU students](#)

### Non-EU students living in the EU at the time of admission

You can regularize your situation at the Foreign Nationals Office in Barcelona ([c/ Múrcia, 42](#)) or register on line **within a month of arriving in Spain**.

### Non-EU students

You have to visit the [Spanish Consulate](#) in your country of origin or country of legal residence. You can begin the process with the **letter of admission** issued by the UAB to students.

Depending on the duration of your Studies, [visas](#) may be for:

- Stays of **up to 90 days** (type C).
- Stays of **up to 6 months** (type D, code SSU).
- Stays of **over 6 months** (type D, code SLU). In this case you will need to apply for the Foreign National Identity Number ([TIE](#)) within **one month** of arriving in Spain.

- [Legal procedures for non-EU students](#)
- [Types of visa](#)
- [Spanish Consulates](#)
- [Foreign National Identity Number \(TIE\)](#)





## UAB employment portal and work permits

### UAB employment portal

UAB students have a series of resources available to facilitate their employment and for finding work or work placements related to their studies. All the resources are available at the [Employability Service](#).

You can also go to the [NEXUS](#) portal or the [UAB research portal](#).

The Employability Service is mainly concerned with the professional employment of students and graduates of the UAB through companies seeking the best professionals and talent from our University.

### Work permits

Under the Law on Foreign Nationals holders of a study permit can also work for a company or organisation or for themselves as long as the employment is compatible with their studies and does not exceed 30 hours a week. [More information here](#)



# Working after studies

## Research and Business

The UAB Research Park aims to solve the challenges of our environment through research and innovation. For this reason, it helps companies and entities to identify their challenges and finds the UAB research groups that can solve them, always from a collaborative and multidisciplinary perspective. Other times, it is the researchers themselves who have the initiative and need help to bring their idea to society. The Research Park is then in charge of finding companies that may need these ideas or funding to develop them both locally and internationally.



## UAB Emprèn

UAB-Emprèn offers training in entrepreneurial skills, with an emphasis on idea generation and social entrepreneurship, as well as advice in the initial phase of entrepreneurial projects.



## Barcelona Activa

Barcelona Activa is a local development agency. Their mission is to contribute to the improvement of the quality of life of the people by promoting the economic competitiveness of the city and rebalancing the territories, by means of fostering quality employment, boosting entrepreneurship, and supporting a plural, diverse and sustainable business fabric, from an economic, social and environmental perspective.




## Job Seeking Visa:

Spanish law on foreign nationals allows non-EU students to apply for a residency permit after completing their official studies to look for new employment opportunities or to carry out business projects. Please contact the International Support Service to find out more about these permits.







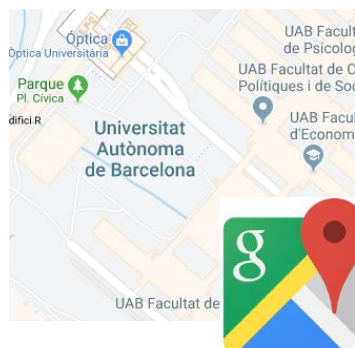
Universitat Autònoma

## How to get to the UAB

The main UAB campus is situated in **Bellaterra**, close to Barcelona, Sabadell, Sant Cugat and Terrassa.

The campus is well communicated and can be easily reached by train, overground metro, bus, car or bicycle, from these four cities. There is a bike park at the UAB overground metro station.

Select an option for more information:



When you arrive at the UAB campus you can come to the [International Support Service \(ISS\)](#) office, where you can get help for any problems you have as students, teaching staff, research and administration and services staff from other countries.

Each of the UAB faculties also has an **International Office**, offering information about the faculty and the courses.

- [Offices for international students](#)



## Immigration and residency procedures on arrival

### EU students

All students from an EU member country or a country that forms part of the European Economic Area, plus Switzerland, who want to live in Spain for a period of **more than three months** have to request registration in the **Central Register for Foreign Nationals**, after which they receive a registration number and a **Foreign National Identity Number (NIE)**.

Registration takes place in person at the **National Police station** in the city of residence.

[More information](#)

### Non-EU students

If you will be in Spain for **more than six months** you have to apply for a [Foreign National Identity Card \(TIE\)](#) within **30 calendar days** of your arrival in the EU.

The TIE is a card that authorises your temporary stay and is valid for the duration of your studies in Spain. It is issued for a maximum of one academic year and **renewed annually**, as long as the legal requirements are met. To apply for your TIE you must have previously applied for an [open study visa](#) (type D, code SLU).

[More information](#)

### Non-EU students living in the EU at the time of admission

You can regularise your situation at the Foreign Nationals Office in Barcelona ([c/ Múrcia, 42](#)) or register on line **within a month of arriving in Spain**.

It is essential that your Foreign National Identity Card (TIE) from the country in which you live is valid and you must have had your passport stamped upon entry into Spain.

The ISS office will give you help to do this procedure on line. Please contact the ISS by writing to: [international.support@uab.cat](mailto:international.support@uab.cat).

If your passport was not stamped when you entered Spain you will have to complete a **declaration of entry** at the National Police station at the airport or the station at [Rambla Guipúzcoa, 74](#) (Barcelona), within **72 hours** of entering Spain.





Si abans de sortir del vostre país heu d'avançar part del pagament, podeu consultar les modalitats de pagament amb la gestió acadèmica del centre on desenvolupareu els estudis.

## Course registration

### Bachelor's degrees

Registration is from **July to September** depending on the date on which you were assigned a place.

Registration takes place **in person** at the [academic management office](#) of the faculty or centre where you will be studying.

Payment must be made by **direct debit**. You must have a bank account in Spain or in the [SEPA](#).

- [How to register](#)
- [Methods of payment](#)

### Official Master's degrees

Registration is in **September**, although the dates may vary depending on the course.

Registration is generally **in person** at the [academic management office](#) of the faculty or centre where you will be studying.

Payment must be made by **direct debit** from a bank account in Spain or in the [SEPA](#) or by **bank card**.

- [How to register](#)
- [Prepayment of registration fees](#)
- [Methods of payment](#)

### UAB Master's degrees and postgraduate courses

- [How to register](#)
- [Methods of payment](#)

### PhD

- [How to register](#)
- [Methods of payment](#)

If you have any questions please contact

**infoUAB**

## UAB membership card

Once you have registered you can request your [UAB membership card](#), which allows you to identify yourself and accredits you as a member of the university community.

- With your **university identification number (NIU)**, which appears on the card, and your password, which you can obtain at <https://oim.uab.es/opwd/?lang=ca>, you can access the [Online Campus](#) and the other online services of the UAB.

- The UAB card also gives you access to some other university [services](#) such as the [libraries network](#), laboratories, etc.
- The card is valid for the whole length of your stay.



- [Online visit of the UAB campus](#)
- [Faculties and schools of the UAB](#)
- [UAB activities diary](#)
- [UAB on social media](#)
- [UAB newsroom](#)
- [UAB shop](#)





# Courses and programmes for international students

## Specific programmes for international students

The UAB offers different programmes for international students who want to spend one semester or a full year in Barcelona.

- [Selected courses](#)
- [Established programmes](#)
- [Tailor-made programmes](#)
- [UAB Barcelona Summer School](#)

## Exchange programmes

The UAB has exchange agreements with students from universities around the world, especially Europe, Latin America and Asia. Currently there are three types of exchange options according to the geographical area.



[Map of exchange agreements](#)

- [Exchange programmes at the UAB](#)



# UAB Barcelona Summer School

The best way to enjoy an international academic summer experience while discovering Barcelona.

The [UAB Barcelona Summer School](#), offers a range of subjects in all areas of knowledge.

Teaching is in **English** and for some subjects in Spanish. You also have the opportunity to **learn or improve your Spanish** in a complementary course.

The subject are offered over two 3-week periods from the end of June to the beginning of August.

All subjects [allow you to obtain 6 ECTS credits](#).

For students from other countries your home university can usually transfer the credits to your academic transcript, especially if they have an active mobility programme with the UAB, although this is subject to the regulations of the home University. Ask at your University.

- [Consult the requirements](#)
- [Consult the calendar and programme for each subject](#)

## Buddy Programme

As well as the university teaching the UAB Barcelona Summer School includes a complementary social activities programme with local students in which to enjoy the UAB experience with the other international students, have fun and get to know about the culture of our country.

- [Consult the Buddy Programme activities](#)



- [UAB Barcelona Summer School](#)  
[video 2 min 38 s]







**UAB**

Universitat Autònoma  
de Barcelona

## International Support Service (ISS)

### International Support Service

The ISS is an office of the Area for International Relations offering support to international students, teaching and research staff and administration and services staff, and their relatives.

The International Support Service gives practical support for your stay in Barcelona and the UAB to give you a better experience and facilitate your academic or professional performance.



Edifici de la Biblioteca de Comunicació i Hemeroteca General

Plaça Cívica - Campus de la UAB  
08193 Bellaterra (Cerdanyola del Vallès)



 + 34 93 581 22 10

 [international.support@uab.cat](mailto:international.support@uab.cat)

- [More information](#)

